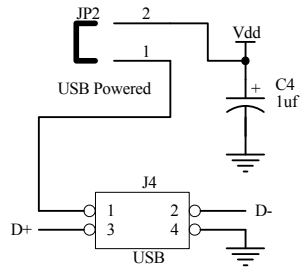
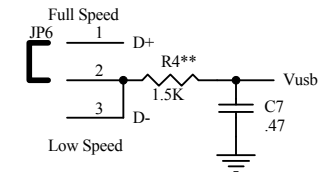


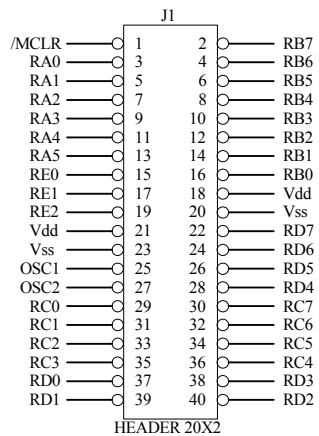
Externally Powered



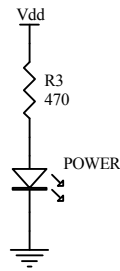
USB Powered



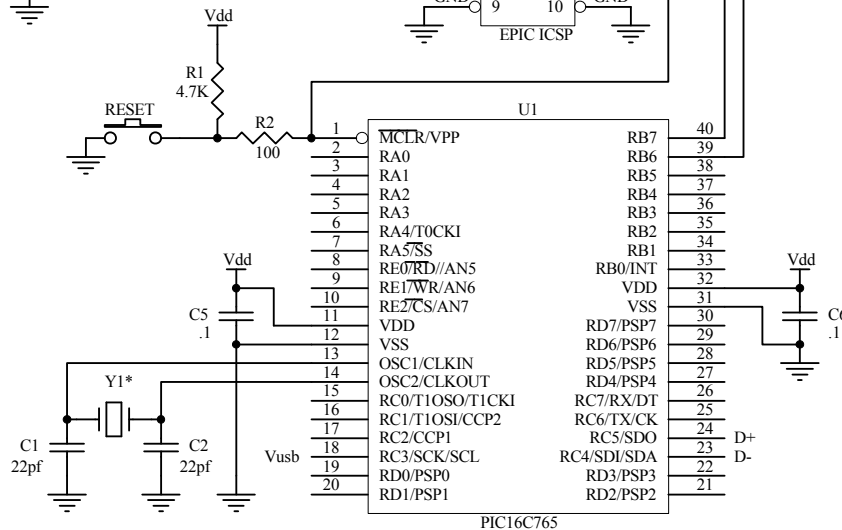
Note: Cut trace on back of board before adding jumper  
\*\* R4 not required for PIC18



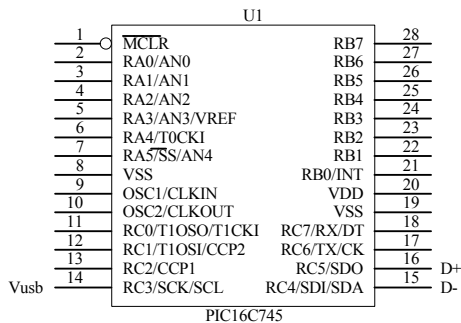
HEADER 20X2



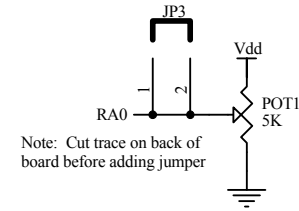
POWER



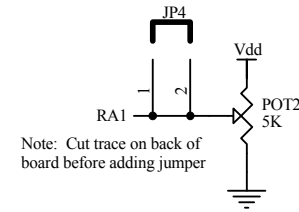
\* Y1 = 6MHz for PIC16,  
20MHz for PIC18



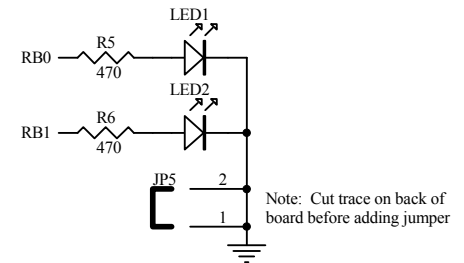
PIC16C745



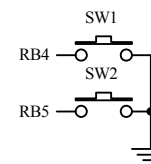
Note: Cut trace on back of board before adding jumper



Note: Cut trace on back of board before adding jumper



Note: Cut trace on back of board before adding jumper



Title		PICPROTO USB Schematic		Copyright 2006 microEngineering Labs, Inc.	
Size	Number	02014		Revision	
Letter				C	
Date:	18-Sep-2006	Sheet 1 of 1			
File:	C:\pfwfiles\ppusb.sch	Drawn By: JMS			